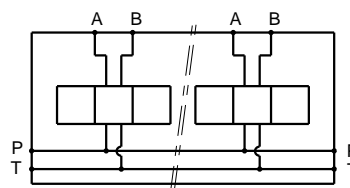


| Stations | X | Y | (kg) |
|----------|-----|-----|-------|
| 1 | 80 | 56 | 5.80 |
| 2 | 160 | 136 | 11.30 |
| 3 | 240 | 216 | 17.00 |
| 4 | 320 | 296 | 22.70 |
| 5 | 400 | 376 | 28.50 |
| 6 | 480 | 456 | 34.20 |
| 7 | 560 | 536 | 39.90 |
| 8 | 640 | 616 | 45.60 |



| Technical specifications | |
|--------------------------|--|
| Material | : Cast iron EN-GJL-250 _ Phosphatation |
| Pressure | : 300 bar max |
| Flow rate | : 120 L/mn max |

Designation code :

MR . K - 5 - * . G

MECABOR
Bottom side
CETOP 5

G : ports BSP
Station number