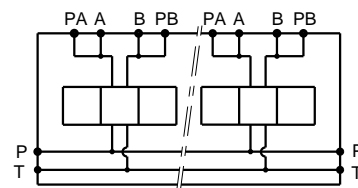


Stations	X	Y	(kg)
1	80	56	5.80
2	160	136	11.30
3	240	216	17.00
4	320	296	22.70
5	400	376	28.50



Technical specifications

Material	: Cast iron EN-GJL-250 _ Phosphatation
Pressure	: 300 bar max
Flow rate	: 120 L/mn max

Designation code :

MR . K - 5 - * . G . P . AB

MECABOR

Bottom entry

CETOP 5

Station number

Pressure test points
on A and B

G : ports BSP